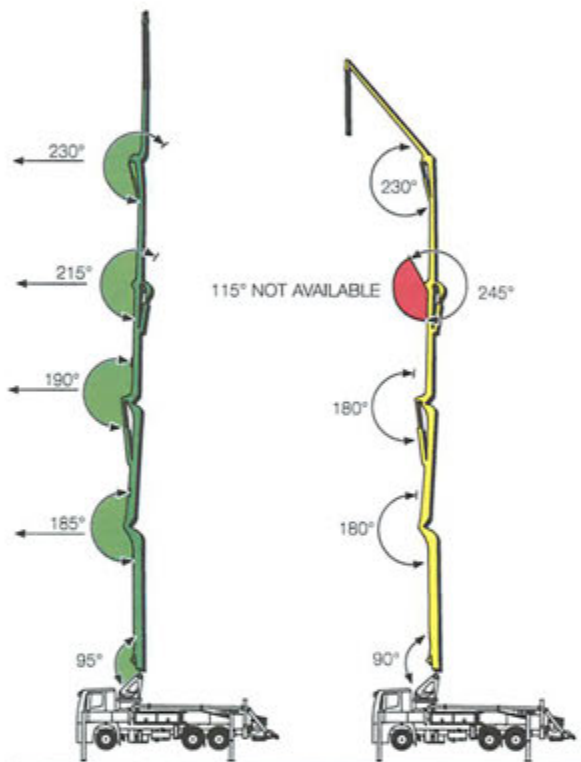
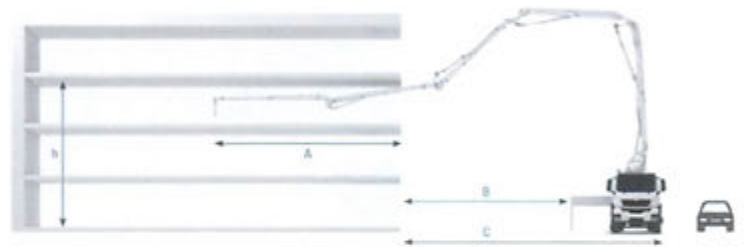


# WHAT JOB FORWARD ARTICULATION DOES FOR YOU



Schwing® Job Forward Articulation.

Conventional Z with restricted movement at 4th section.



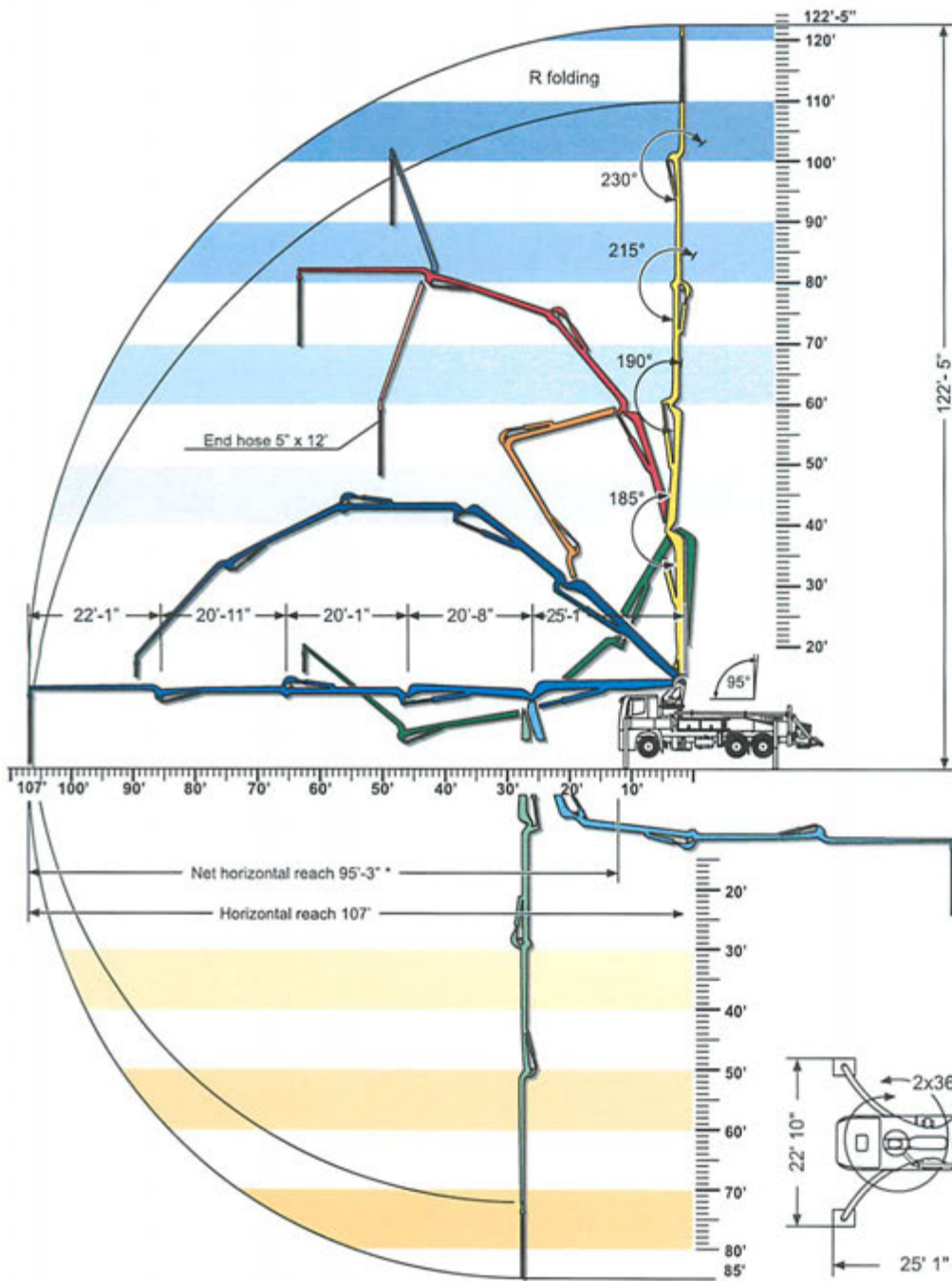
h FLOOR	A Horizontal Reach in the floor	B Distance between outriggers & building	C Distance between vehicle outer edge & building
Ground floor (9' 10" height)	53' 10"	41'	56' 1"
1 <sup>st</sup> floor (19' 8" height)	60' 4"	34' 5"	49' 6"
2 <sup>nd</sup> floor (29' 6" height)	66' 11"	27' 11"	43'
3 <sup>rd</sup> floor (39' 4" height)	73' 6"	21' 4"	36' 5"



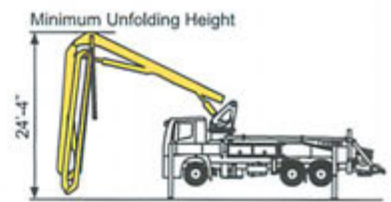
h FLOOR	A Vertical reach inside hall	B Distance between outriggers & hall	C Distance between vehicle outer edge & hall
16' 5"	73' 10"	21' 4"	36' 5"
19' 8"	77' 1"	18'	33' 1"
23'	80' 5"	14' 9"	29' 10"
26' 3"	107' (max. horizontal reach)	Setup inside the hall possible (folding height: 24' 3")	

Reach in to pour decks on multi-story buildings without adding pipeline. Pump where other machines cannot reach for more pours in a day and higher utilization.

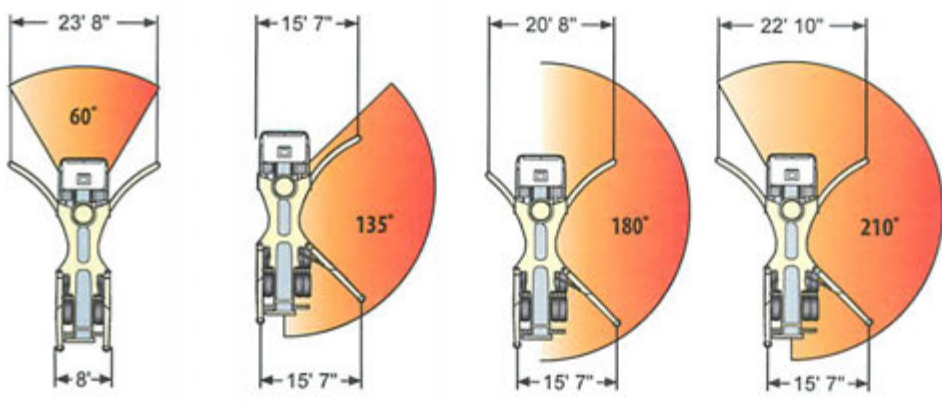
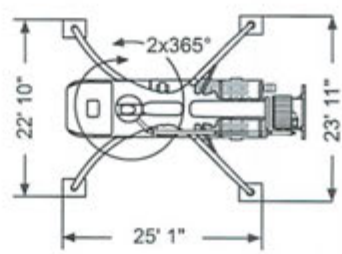
Pour floors faster on warehouses and industrial buildings by reaching in for better ready-mix access.



**Job Forward Reach**  
 Compare this five section boom to any other machine on the market. Schwing® leads with job forward Roll and Fold set-up and articulation that out performs Z booms in all scenarios.



Combine ultimate boom versatility with compact footprint to excel on every job.



Four EASy set-up options to accommodate every job site.

# STANDARD FEATURES



## Boom

Five-section articulating boom with 915° of total articulation.

## Outriggers

Super X Outriggers telescope out and around obstacles.

## EASy

One-sided outrigger set-up in four configurations.

## Rock Valve™

Lowest cost per yard through longer wear, faster clean out and fewer wear parts.

## Pipeline

5" Twin Wall Super 3000 on Boom, Super 3000 Deck Pipeline.

## Auto Greaser

Maintains lubrication on Rock Valve™.

## Night Light

Illuminates work area for safety and security.



## VECTOR System

The VECTOR system provides proportional radio remote control of the boom functions and communicates with the operator to stay fully informed of the pump's status. It also monitors the boom's position in EASy mode to ensure the safety of the pump and operator.



## Storage

Generous storage has been designed into the pump chassis and outriggers for pipe sections, clamps and other hardware.

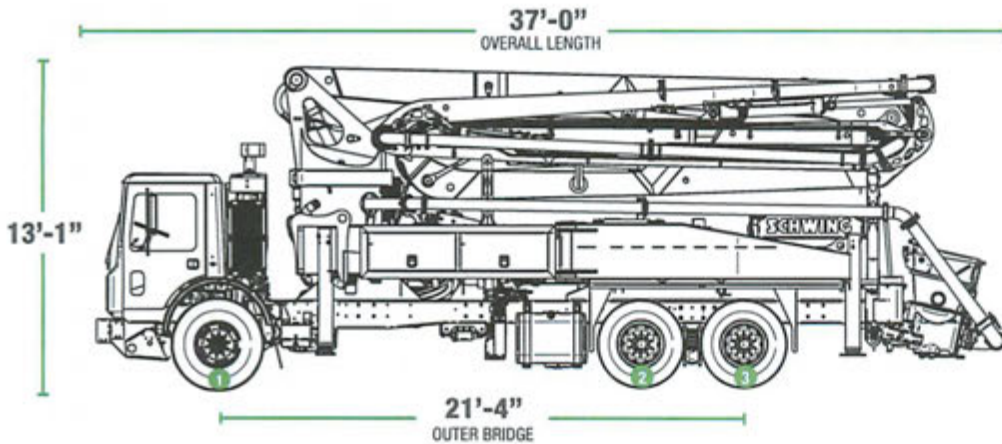
## Lockable Tool Compartments

Keeps machine organized while protecting VECTOR controls and remote box.



# TRUCK OPTIONS

## 3-AXLE CABOVER TRUCK

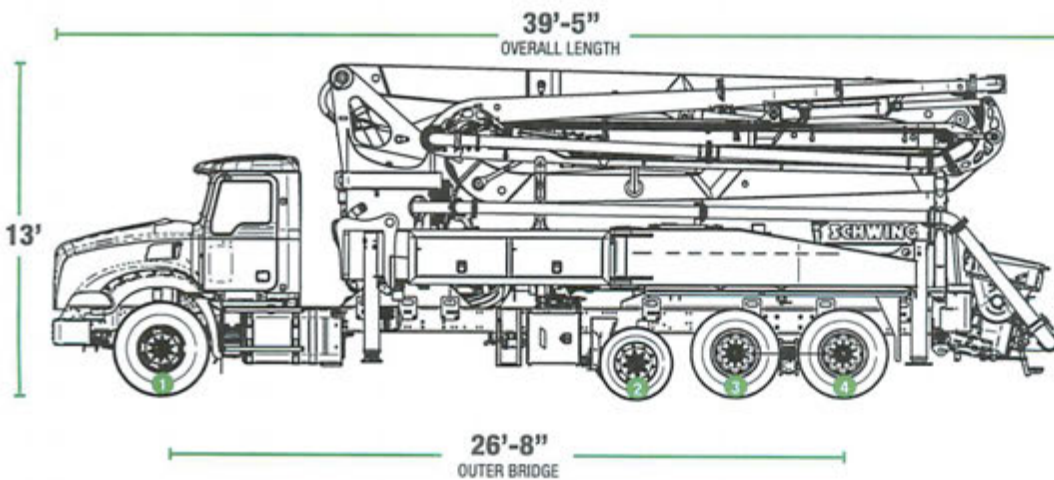


Axle #1	18,980 LB [8609 kG]
Axle #2	20,000 LB [9072 kG]
Axle #3	20,000 LB [9072 kG]
<b>Total</b>	<b>58,980 LB [26,753 kG]</b>

Axle load with fuel & water

## 4-AXLE CONVENTIONAL TRUCK

Federal Bridge Legal



Axle #1	17,820 LB [8083 kG]
Axle #2	8000 LB [3629 kG]
Axle #3	16,640 LB [7548 kG]
Axle #4	16,640 LB [7548 kG]
<b>Total</b>	<b>59,100 LB [26,808 kG]</b>

Axle load with fuel & water

# SPECIFICATIONS

## S 38 SX

Pump Kits	Three-axle cab-over truck 2525H-6 120/85 MPS pump with Big Rock™		Four-axle conventional truck 2023-5 110/75 MPS pump with M Rock	
	U.S.	Metric	U.S.	Metric
Theor. Concrete Output Per Hour (cubic yards - cubic meters)	213	163	179	137
Maximum Pressure on Concrete (psi - bar)	1169	80	1094	76
Strokes Per Minute	22	22	27	27
Material Cylinder Diameter (in. - mm)	10	254	9	230
Material Cylinder Stroke Length (in. - mm)	98	2500	79	2000
Differential Cylinder Size (in. - mm)	4.7	120	4.3	110
Valve Type	Std. B-Rock		Std. M-Rock	
Maximum Aggregate Size (in. - mm)	2.5	63.5	2.5	63.5

### Boom Specifications

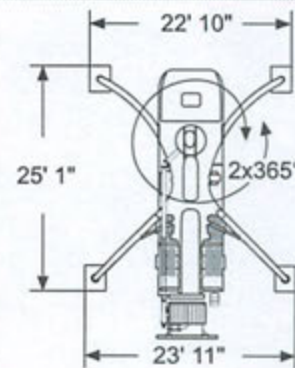
Pipeline Diameter (in. - mm)	5	125	5	125
Vertical Reach (ft.-in. - m)	122-5	37.3	122-5	37.3
Horizontal Reach (ft.-in. - m)	107	32.6	107	32.6
Net Horizontal Reach (ft.-in. - m)	95-3	29	92-2	28.1
Unfolding Height (ft.-in. - m)	24-4	7.4	24-4	7.4
Slewing Range (degrees)	730°	730°	730°	730°
End hose length (ft. - m)	12	3.5	12	3.5

### Section Lengths

First Section (ft.-in. - m)	25-1	7.7	25-1	7.7
Second Section (ft.-in. - m)	20-8	6.3	20-8	6.3
Third Section (ft.-in. - m)	20-1	6.1	20-1	6.1
Fourth Section (ft.-in. - m)	20-11	6.4	20-11	6.4
Fifth Section (ft.-in. - m)	22-1	6.7	22-1	6.7

### Outriggers

Design	Super X Outriggers, fully hydraulic, extension and jacking	
Front (ft.-in. - m)	22-10	6.96
Rear (ft.-in. - m)	23-11	7.29
Length (ft.-in. - m)	25-1	7.64
Load Front (lbs. - kg)	43,838	19,885
Load Rear (lbs. - kg)	46,086	20,904
Soil Pressure Front	626 psi (w/o Dunnage) 78 psi (w/ Dunnage)	
Soil Pressure Rear	359 psi (w/o Dunnage) 82 psi (w/ Dunnage)	
EASy 135° Set-up Front (ft.-in. - m)	15-7	4.75
EASy 135° Set-up Rear (ft.-in. - m)	15-7	4.75



Specifications are subject to change without notice.



5900 Centerville Road | St. Paul, MN 55127 | TEL 1-888-SCHWING  
 FAX 651-429-3464 | www.schwing.com